



Chantrey House, Belgravia
London SW1W

GARTON JONES.COM



Chantrey House, Belgravia London, SW1W

£1,800 Per Week

GARTON JONES.COM

8 Gatliff Road
Grosvenor
Waterside
Chelsea
London
SW1W 8DP

Sales +44 (0) 20 7730 5007
gws@gartonjones.com
www.gartonjones.com

A beautiful 3 BEDROOM apartment to rent of approx. 1496 sq.ft (139.01 sq.m) in Chantrey House, a small residential development in Belgravia. The property is FURNISHED* to a high standard and benefits from a dual aspect open plan reception room, a MODERN kitchen with a breakfast bar and Miele integrated appliances. There are 3 luxury bathrooms (all en-suite with underfloor heating) plus a guest cloakroom. There is wood flooring, air conditioning and good storage including fitted wardrobes to all bedrooms. 24 HOUR CONCIERGE. Chantrey House is a Grade II listed Edwardian property and sits within leafy Belgravia, one of the most prestigious and sought after residential areas of London.

Available via our office on-site at Grosvenor Waterside (underneath Bramah House - approx. 5 min walk). Belgravia and Elizabeth Street, Knightsbridge, and Sloane Square are within easy access and Victoria Station with Gatwick Express are just a few minutes' walk. Hot water is also included.

*Please note the furniture may differ or not be included to that shown in current photos.

Please note that pets are not permitted on this development.

Council Tax: Westminster City Council (band H).

6 week deposit required. 12 month minimum term.

EPC Rating: C (75)

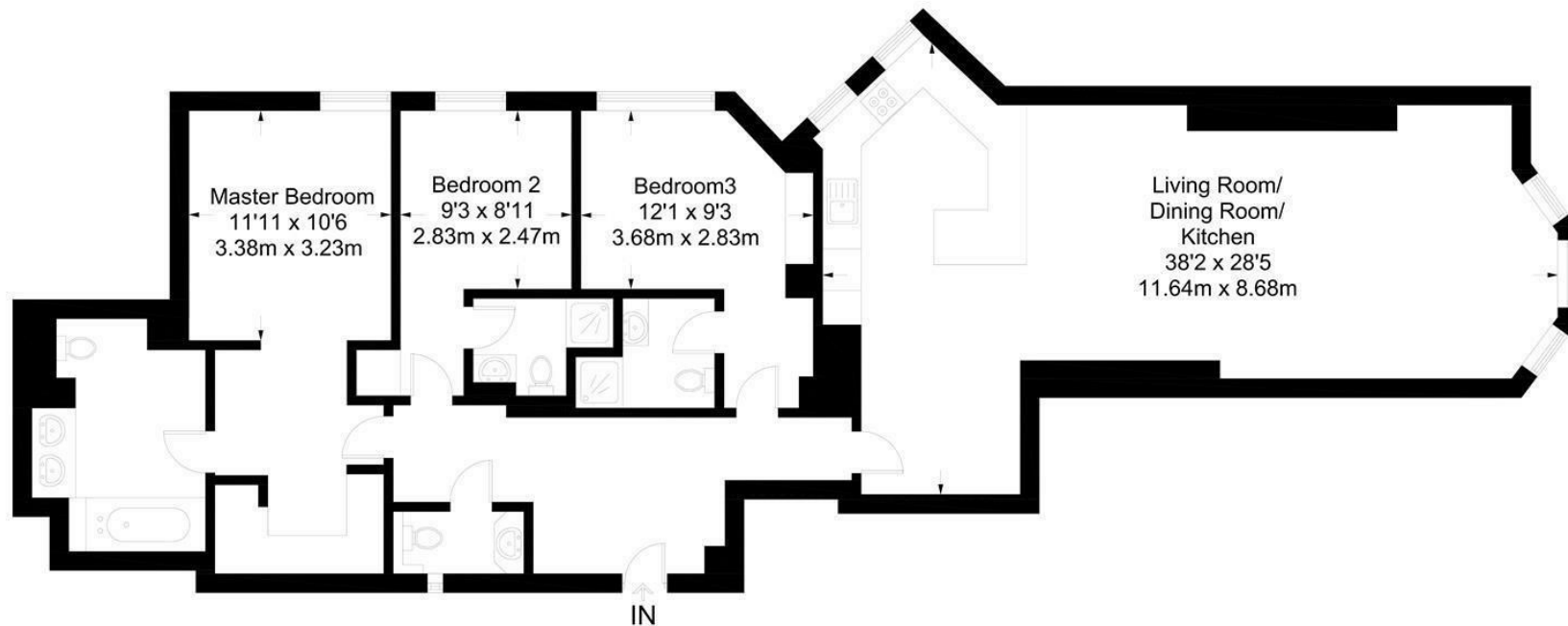
EPC certificate available on request.

- 1496 Sq.ft (139.01 Sq.m)
- 3 Bedroom Apartment
- Open Plan Reception Room
- Modern Integrated Kitchen
- 3 Luxury En-Suite Bathrooms
- 24 Hour Concierge Service
- Guest Cloakroom
- Comfort Cooling
- Close to Victoria Station With Gatwick Express
- Belgravia, Elizabeth Street, Knightsbridge, & Sloane Square Are Within Easy Access



Eccleston Street

Approximate Gross Internal Area = 1481 sq ft / 137.58 sq m



1450 sq ft / 135 sq m

Not to scale, for guidance only and must not be relied upon as a statement of fact.
All measurements and areas are approximate only and have been prepared in accordance with the current edition of the RICS Code of Measuring Practice.

